

# Arkworlds Areas of Income

1. Ark Retail Profit
2. Ark Royalty Kommission (A.R.K)
3. Ark Matching Bonus
4. Ark Breakaway Bonus
5. Ark Infinity Bonus

## 1. Ark Retail Profit

(Open to everyone)

Distributors are paid 20% to 40% retail profit, based on personal volume of sales.

To assess what buying privilege a Distributor qualifies for we work on a Sliding Scale basis, as follows:

| Personal Volume | Discount |
|-----------------|----------|
| 800 +           | 40%      |
| 600-799         | 35%      |
| 400-599         | 30%      |
| 200-399         | 25%      |
| 0-199           | 20%      |

As with all businesses retail is the foundation and heart of every successful company.

Therefore this is the most important area of income.

**R + R = R** (Retail + Recruiting = Royalty)

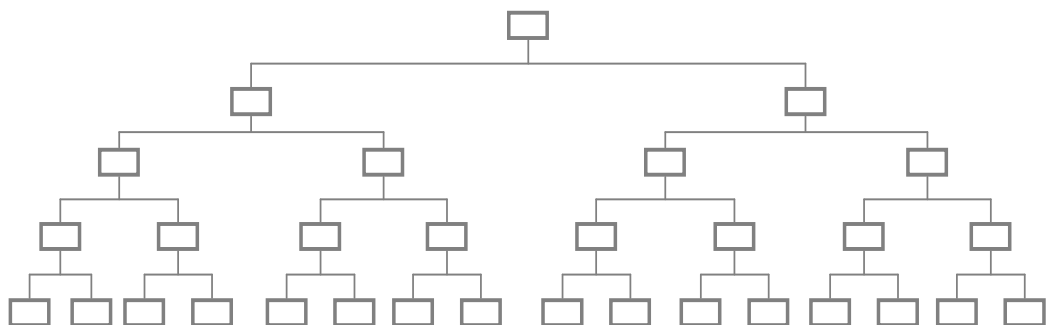
## 2. Ark Royalty Kommission (A.R.K)

Ark Royalty Kommission is paid monthly to Distributors on the wholesale volume that their Distributors achieve in their organization, 4 levels deep.

Example:

Level Commission

- 1 > 2%
- 2 > 4%
- 3 > 8%
- 4 > 16%



Ark Royalty Kommission is paid to all those Distributors who achieve **Consultant Position** and above in the **ARKETING PLAN**.

(Please see **ARKWORLD'S STAIRWAY TO SUCCESS** chart for qualifications for Consultant)

## Earning Example:

### 1 US Dollar = 1 Ark Royalty Point (A.R.P)

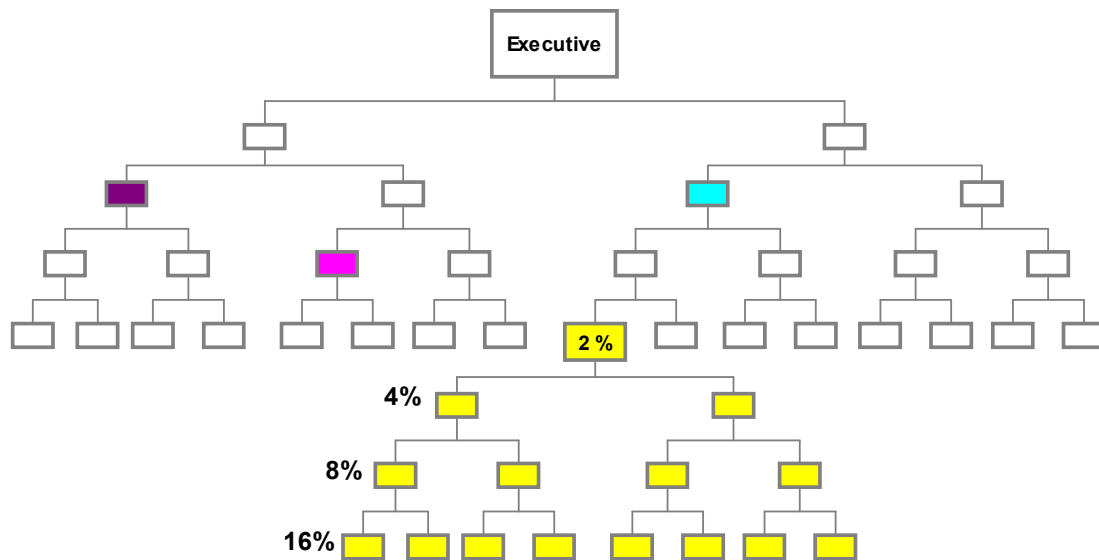
Based on Distributors achieving 800 pv (personal volume) points each, your earnings would be as follows:

| LEVEL        | EARNINGS          |
|--------------|-------------------|
| 1            | 32 A.R.P          |
| 2            | 128 A.R.P         |
| 3            | 512 A.R.P         |
| 4            | 2048 A.R.P        |
| <b>TOTAL</b> | <b>2720 A.R.P</b> |

2720 A.R.P gives you a total earnings of \$2,720.00 / £1750.00

## 3. Ark Matching Bonus

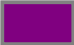



An Ark Matching Bonus is paid monthly to Distributors who have achieved **Executive** status and above in the Arketing Plan. Any qualified Executive would receive a Matching Bonus from every personally sponsored Distributor 4 levels deep.



Ark Matching Bonus enables you to earn up to 7 levels deep in the Arketing Plan. However it's more exciting than just that, because wherever you personally sponsor someone in your 2 x 4 Breakaway Ark you would earn 2, 4, 8 and 16%.

Wherever you personally sponsor someone you will earn another 4 levels from that person, on top of your original Ark. Therefore you can have a number of Arks overlapping, creating double and treble commissions.

From this example above with everybody achieving 800 pv (Retail Sales) you would earn the following:

|   |            |
|---|------------|
|  | \$1,360.00 |
|  | \$1,360.00 |
|  | \$1,360.00 |
|  | \$1,360.00 |

Each colour represents each of your personally enrolled distributors and the Ark Matching Bonus that you have earned from each Ark

**Ark Royalty Kommission (A.R.K) = \$2,720.00**  
(Earnings from your original 2 x 4 Ark)

**Ark Matching Bonus**  
= (4 X \$1,360.00) = \$5,440.00

**TOTAL EARNINGS = \$8,160.00 / £5,250.00**

(Please see **ARKWORLD'S STAIRWAY TO SUCCESS** chart for qualifications for Executive).

## 4. Ark Breakaway Bonus

Once a Distributor has filled up a 2 x 4 Breakaway Ark with 30 people in it and has qualified for the N.E.T Team (National Expansion Team) position in the company, he or she will be awarded an Ark Breakaway Bonus of 2 % in recognition of this achievement, paid monthly.

After the first Ark has been filled up, a Distributor will then breakaway and by personally sponsoring people, build a brand new Ark.

Every time a 2 x 4 Ark is filled up, a Distributor will breakaway and the process can continually repeat itself. For every new Ark a 2% bonus will be paid, based on the Organisational Volume Points or dollars of business that their Distributors have achieved in their organisation.

### For Example:

Following on from our previous examples, if a Distributor builds one Ark with every person achieving 800 pv (personal volume) points, he or she would earn the following:

- **Ark Royalty Kommission (A.R.K) = \$2,720.00**  
(Earnings from your original 2 x 4 Ark)
- **Ark Matching Bonus = (4 X \$1,360.00) = \$5,440.00**
- **Ark Breakaway Bonus = \$512.00**
- **TOTAL EARNINGS = \$8,672.00 / £5,250.00**

Some Distributors will build 2, 3, 4, 5 and 10 Arks or maybe even 100 Arks or more, which will double and treble their income many times.

- **10 x Arks built would earn a Distributor = \$86,720 / £56,000 per month.**
- **100 x Arks built would earn a Distributor = \$867,200 / £560,000 per month**

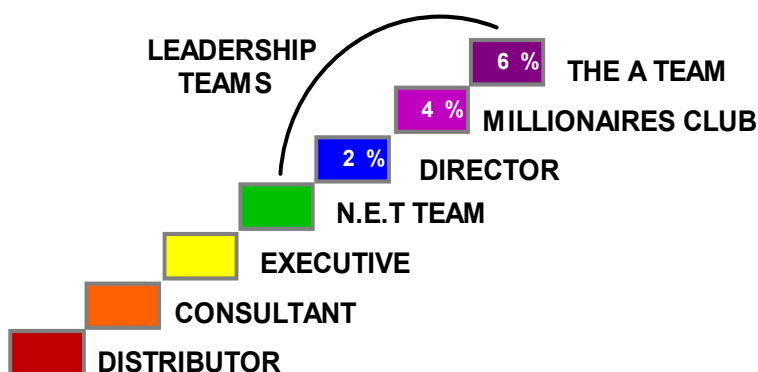
Ark Breakaway Bonus will be paid to all those Distributors that achieve **N.E.T Team (National Expansion Team)** and above in the Arketing Plan.

(Please see **ARKWORLD'S STAIRWAY TO SUCCESS** chart for qualifications for N.E.T Team.)

## 5. Ark Infinity Bonus

There are 7 positions in the Arketing Plan, one for every colour of the rainbow.

See below...



As a Distributor works their way up the Stairway to Success, they will obviously achieve higher levels of Retail Profit, Royalty Commissions and Bonuses etc.

However, once a Distributor reaches the top 3 Leadership Teams, they will qualify to earn an **ARK INFINITY BONUS of 2, 4, or 6%**, depending on their position. This bonus will be paid monthly on every person in a Distributors organisation, however deep it goes, infinitely.

### Example 1:

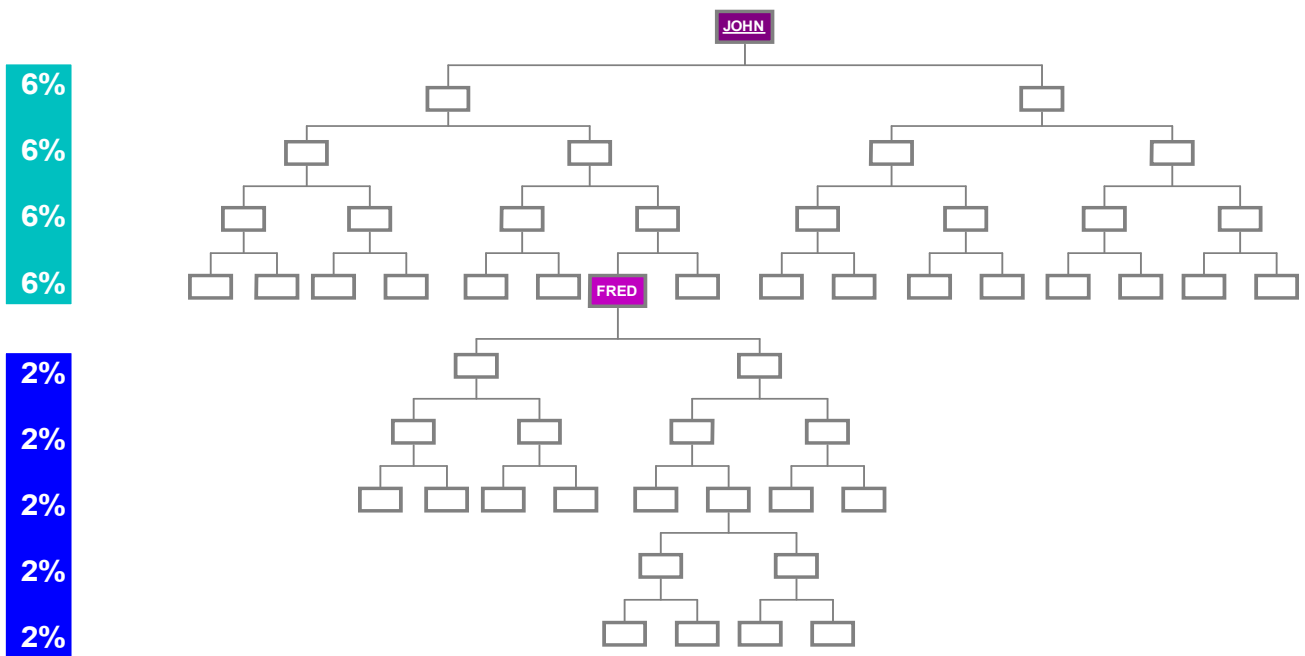
If a Distributor reaches the Directors position in the Leadership Teams as shown above, he or she would receive a 2% Ark Infinity Bonus on their whole organisation, infinite levels deep. However, when a Distributor in the Directors Team reaches another Director in his or her organisation, who is also earning a 2% Ark Infinity Bonus, their bonus would stop.

### Example 2:

In the example below, let's say a Distributor has reached the position of A Team, he or she would earn a 6% Ark Infinity Bonus to Infinity. However, let's also say, that in their organisation they have a Distributor who is in the Millionaires Club and earning a 4% Ark Infinity Bonus. Once the A Team members Bonus of 6% reaches the Millionaires Club member, the A Team members bonus would go down to 2% and carry on throughout the Millionaires Club Members organisation, to Infinity.

So the 6% Ark Infinity Bonus is shared by the Leadership Teams, unless there are no Leadership Team Members in their organization.

### For Example:



In the diagram above, John who is a qualified A Team member earns a 6% Ark Infinity Bonus from his entire organisation to Infinity. However as you can see above, when the Infinity Bonus reaches Fred who is a qualified Millionaires Club member, the Ark Infinity Bonus goes down to 2%. This is because Fred at the Millionaires Club position is entitled to a 4% Ark Infinity Bonus and as the Leadership Teams share an Infinity Bonus of 6%, Johns' percentage goes down to 2%.

**The Ark Infinity Bonus is simply amazing** and can send incomes soaring to the magical seven figure Incomes that we all hear about. It also gives the Leadership the recognition that they deserve.

To qualify for the Ark Infinity Bonus, a Distributor will need to achieve the required amount of Organisational Points within their organisation and then maintain that level from month to month.

**The Ark Infinity Bonus will be paid to all those Distributors who achieve the position of Director, Millionaires Club and A Team in ARKWORLD'S Arketing Plan.**

Please see **ARKWORLD'S STAIRWAY TO SUCCESS** chart for qualifications and rewards for all the Leadership Teams.